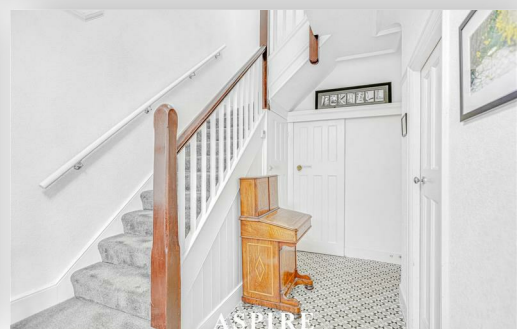


To arrange a viewing contact us
today on 01268 777400



ASPIRE



Bath Road, Romford Guide price £500,000

This beautifully maintained three-bedroom terraced home on the popular Bath Road in Chadwell Heath offers spacious accommodation and a family-friendly layout.

The ground floor includes two generous reception rooms, with one leading into a modern open-plan kitchen designed for low-maintenance living and a seamless flow throughout the space. There is also a convenient downstairs shower room, perfect for guests or busy family life.

On the first floor, you'll find three good-sized bedrooms along with a contemporary family bathroom, providing comfortable and practical living accommodation.

Ideally located, the property is just a short distance from Chadwell Heath Station, giving excellent access into Central London via the Elizabeth Line. A variety of local amenities including shops, supermarkets, cafés, and restaurants are all within walking distance. The area also offers well-regarded schools, regular bus connections, and nearby parks and open spaces, making it an excellent choice for families and commuters alike.

Combining a convenient location, spacious interiors, and great local amenities, this home presents an excellent opportunity to own a well-connected property in the heart of Chadwell Heath.

Residential permit parking and private garages available to rent.

Available from the 21st.

www.aspireestateagents.co.uk

Energy Efficiency Rating	
	Current
Very energy efficient - lower running costs	94
(92 plus) A	
(81-91) B	
(69-80) C	
(55-68) D	
(39-54) E	
(21-38) F	
(1-20) G	
Not energy efficient - higher running costs	
England & Wales EU Directive 2002/91/EC	
Environmental Impact (CO ₂) Rating	
	Current
Very environmentally friendly - lower CO ₂ emissions	
(92 plus) A	
(81-91) B	
(69-80) C	
(55-68) D	
(39-54) E	
(21-38) F	
(1-20) G	
Not environmentally friendly - higher CO ₂ emissions	
England & Wales EU Directive 2002/91/EC	



Under the Property Misdescriptions Act 1991 we make every effort to ensure our sales details are accurate but they are a general outline and do not constitute any part of an offer or contract. Any services, equipment and fittings have not been tested and no warranty can be given as to their condition. We strongly recommend that all the information provided be verified by your advisors and in particular, measurements required for a specific purpose such as fitted furniture or carpets. Please tell us if you have any problems and members of our branches will help either over the phone or in person. A copy of our complaints procedure is available on request. The details are issued on the strict understanding that any negotiations in respect of the property named herein are conducted through Aspire Estate Agents.